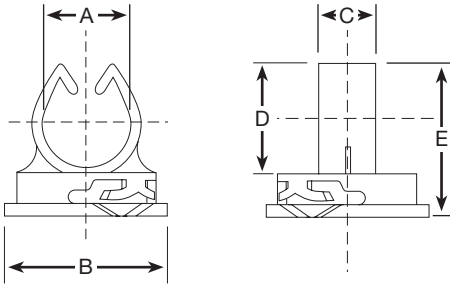


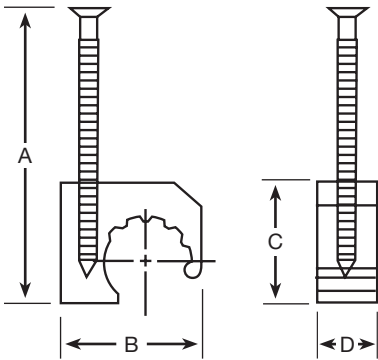
Viega Wire Mesh Clip Plastic - Model 2865.1US



| Part No. | A (in) | B (in) | C (in) | D (in) | E (in) |
|----------|-----------|-----------|-----------|-----------|-----------|
| 15301 | 0.75 | 1.625 | 0.56 | 1.0 | 1.5 |

Normal Uses: Attaching Viega Barrier PEX tubing to wire mesh
 Tubing Compatibilities: 1/2", 5/8" Viega Barrier PEX tubing
 Material Makeup: Plastic
 For Wire Diameter: 1/8" to 3/16"
 Package Quantity: 100 clips

Viega J-clamp Plastic - Model 2860US



| Part No. | PEX Tubing Size (in) | A (in) | B (in) | C (in) | D (in) |
|----------|-------------------------|-----------|-----------|-----------|-----------|
| 52000 | 3/8 | 1.60 | 0.90 | 0.80 | 0.40 |
| 52020 | 1/2 | 1.60 | 1.10 | 0.90 | 0.40 |
| 52040 | 3/4 | 2.13 | 1.30 | 1.20 | 0.42 |
| 52060 | 1 | 2.38 | 1.70 | 1.50 | 0.50 |

Normal Uses: Attaching Viega Barrier PEX tubing to wood surfaces
 Tubing Compatibilities: 3/8", 1/2", 3/4", 1"
 Material Makeup: Plastic clip with ring shank steel nail
 Package Quantity: 100 J-clamps